



# Spring 2026 Fundraiser

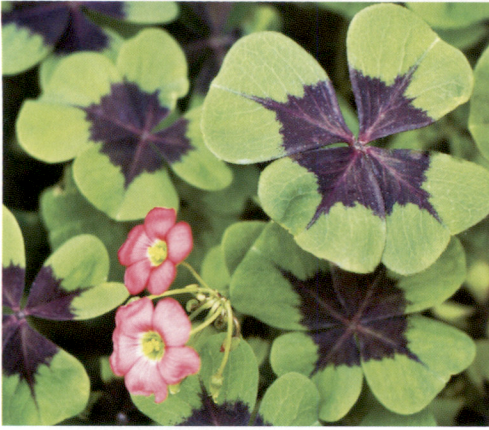
Now you can grow  
flowers like a  
Master Gardener!

BULBS IN THIS BROCHURE  
SHIP BETWEEN MARCH 15  
AND LATE MAY.

FOR THE BEST RESULTS,  
PLANT YOUR BULBS  
DURING THIS SEASON.  
AVOID STORING BULBS FOR  
FUTURE SEASONS.



Item "M" Ranunculus Mix



### A. Good Luck Shamrocks

Deep purple markings in the center of this plant highlight where the leaves meet and create a stunning contrast. Atop the extraordinary foliage, clusters of rosy-pink blooms open in the summer and can stay into the fall. Plant 1-2" deep and 3" apart in full sun to partial shade. Moderate to low water needed.

Spring Planting, Bloom: summer to fall, Ht: 8-12"

**24 Bulbs \$15.00**   



### B. Everbearing Strawberries

The best available virus-free strawberry plants. Large, red, juicy berries in the spring and throughout the summer. These are top performers and will yield firm berries with excellent flavor.

Spring Planting, Bloom: Spring and Summer, Ht: 10"

**8 Plants \$15.00** 

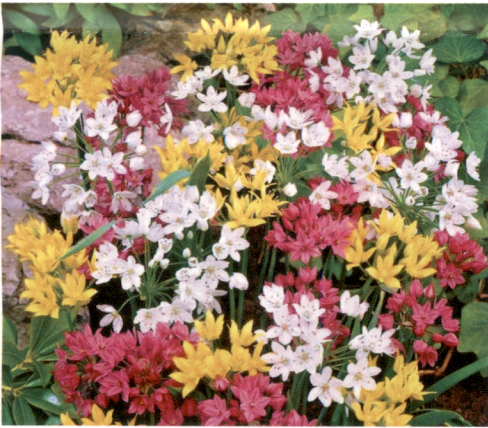


### C. Harlequin Flowers

Colorful trumpet-shaped blooms or orange, pink, red and white with contrasting black-shaped throats! Plant 2-3" deep and 4" apart in average, well-drained soil. These bulbs need full sun to partial shade for best results.

Spring Planting, Bloom: Early to Mid Summer, Ht: 10-12"

**12 Bulbs \$15.00**   



### D. Spring Allium Mix

Hard working and easy to grow! These pleasingly fragrant blooms make great varieties for bees and butterflies, while at the same time are rodent and deer resistant. Plant 2-3" apart and 2-3" deep in well-drained soil in full sun to partial shade.

Spring Planting, Bloom: June-July, Ht: 10-16"

**24 Bulbs \$15.00**   



### E. Anemone St. Brigid

Striking, double or semi-double blooms, available in a mix of colors like red, blue, pink, white, and purple. Their delicate, fern-like foliage complements the vibrant flowers, making them a popular choice for garden borders, cut flower arrangements, and naturalized settings. These low-maintenance flowers are ideal for attracting bees and butterflies.

Plant 2-3" deep and 4-6" apart in well-drained soil and full sun. Spring Planting, Bloom: 10-12 weeks after planting, Ht: 12-14"

**10 Bulbs \$15.00**   



### F. Four O'Clock

Afternoon-opening blooms in a wide range of vivid colors. The trumpet-shaped flowers emit a pleasant subtle vanilla fragrance that hummingbirds and butterflies adore. Plant 4-6" deep and 18-24" apart in full sun in well-drained soil.

Spring Planting, Bloom: July-September, Ht: 36-48"

**3 Bulbs \$15.00**  



### G. Spectacular Gladiolus

Stately blooms in a dazzling multi-colored assortment. Plant 6-9" apart and 3" deep in well-drained soil and in full sun or shaded areas for best results. If soil is dry, add water and fertilize.

Spring Planting, Bloom: 90 days After Planting, Ht: 4-5'

**10 Bulbs \$15.00**   

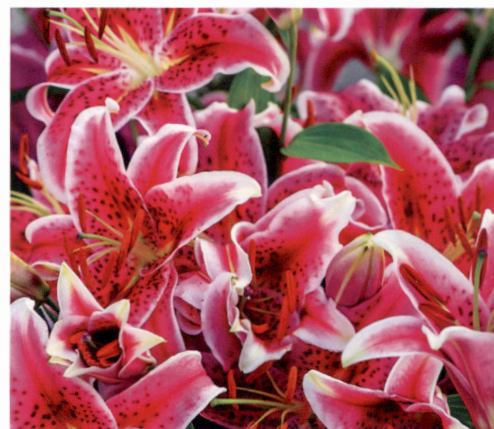


### H. Crocosmia Mix

Our orange, red and yellow trumpet-shaped flowers will attract pollinators such as hummingbirds and butterflies. They thrive in full sun and open in succession from the bottom up like gladiolus. They have sword-shaped foliage which adds an attractive vertical element to any garden. Plant 3" deep and 4" apart with pointed ends facing UP.

Spring Planting, Bloom: June-August Ht: 3-4'

**10 Bulbs \$15.00**  

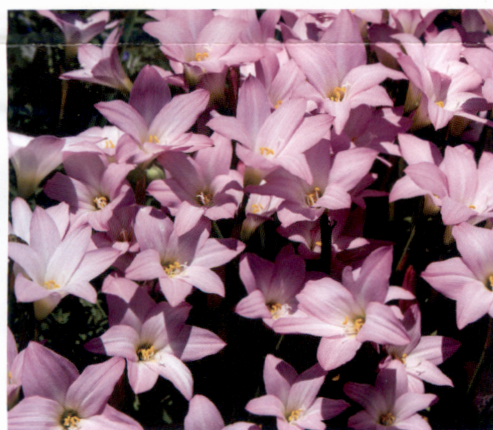


### I. Stargazer Lilies

Pink to crimson, with white edges and dark spots on these beautiful blooms. Plant in full sun to partial shade. This plant prefers well-drained soil but will tolerate heavier soils. Plant 6" deep and 9-12" apart.

Spring Planting, Bloom: July-September, Ht: 25-30"

**2 Bulbs \$15.00**   



### J. Pink Rain Lilies

These bulbs will produce an abundance of charming, large pink flowers for an incredibly long period of time, June through September. Perfect to use as groundcover or with a rock garden. Plant 4" deep and 6" apart.

Spring Planting, Bloom: Mid to Late Summer (3-5 days after a rain shower), Ht: 6-12"

**10 Bulbs \$15.00**  



### K. Variegated Hosta

The variegated varieties need more sunlight to keep their white and golden stripes. All hostas need shade and few will do well in strong, direct sunlight. Plant in a hole about twice the width and depth of the root ball of the plant.

Spring Planting, Bloom: Late Summer, Ht: 18-32"

**1 Plant \$15.00**   



### L. Elf Lilies

Naturally low-growing. Great for pots, planters or borders. You will love these easy-to-grow flowers! Plant 4" deep and 6" apart in full to partial sun and in well-drained soil.

Spring Planting, Bloom: July-September, Ht: 16"

**2 Bulbs \$15.00**   



### M. Ranunculus Mix

Lovely mix of colors will bloom from these mixed corms. They are perfect for borders, beds, containers and cut flowers. Plant 4-6" apart and 2" deep in full to partial sun. Water well in drained-soil and maintain average moisture.

Spring Planting, Bloom: June-August, Ht: 12-24"

**8 Bulbs \$15.00** ☀️ ☁️ 🐾



### N. Lavender Astilbe

Plumes of rich, delicate, feathery flowers adorned with lush, attractive foliage. Easy to grow and dependable, this can be planted in medium shaded, well-drained soil. Plant with the roots pointing downward and slightly fanned so the "eyes" approximately 1" below the soil level. Space 12" apart and water periodically.

Spring Planting, Bloom: June-August, Ht: 18-24"

**1 Plant \$15.00** ☀️ ☁️ 🐾

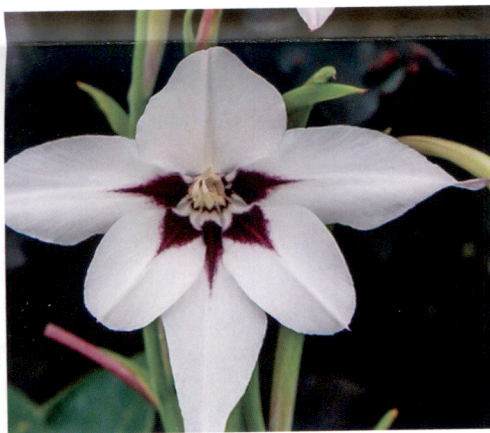


### O. Blazing Stars

Very attractive rosy-purple spiked flower. Stem covered with grass-like foliage of dark green. Grows well in poor soil. Perfect for tall borders. Excellent for cut flowers. Plant 5" deep and 6" apart.

Spring Planting, Bloom: August-September, Ht: 4-5'

**12 Bulbs \$15.00** ☀️ ☁️ 🐾

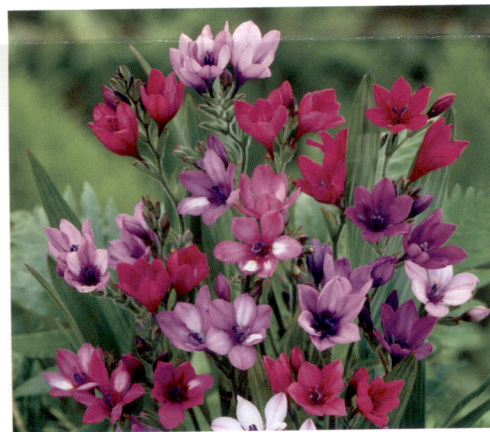


### P. Peacock Orchid

This annual holds onto summer with a sweet-scented late bloomer. Elegant, creamy-white 4" flowers with a prominent purple center atop sturdy stem. Plant 3-5" deep and 3-6" apart in full sun and keep well-drained soil moist. Easy to grow!

Spring Planting, Bloom: July-October, Ht: 24-36"

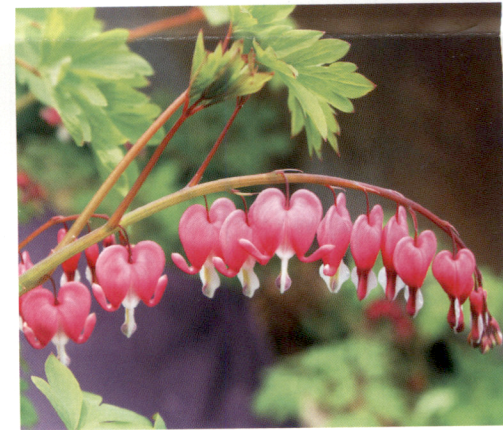
**18 Bulbs \$15.00** ☀️ 🐾



### Q. Baboon Flower Mix

Baboon Flowers produce clusters of showy, trumpet-shaped flowers in striking shades of purple, pink, and white. Compact and low-growing, perfect for rock gardens, borders, or container planting. Plant 2-3" deep and 2-4" apart in well-drained soil. Full sun is preferred but light shade is recommended for hotter climates. Spring planting, Bloom 10-12 weeks after planting, Ht: 8-12"

**10 Bulbs \$15.00** ☀️ 🐾



### R. Bleeding Hearts

A romantic favorite from Victorian gardens with arching branches with rows of delicate pink heart-shaped flowers. Extremely vigorous. Plant in partial shade and in moist, well-drained soil.

Spring Planting, Bloom: Spring, Ht: 1-3' tall, 2-3' wide

**1 Plant \$15.00** ☀️ 🐾



# Selling Tips Made Simple

## Tips for a Successful Fundraiser

### What to Say When Selling:

Hi! My name is \_\_\_\_\_ and I'm raising money for \_\_\_\_\_.

Would you be willing to support us by purchasing some flower bulbs or plants today?

They're guaranteed to grow and our group earns 50% of every sale!

### Be sure to tell your supporters:

- These are bare-root plants and bulbs—they need to be planted this season.
- Do not store them for future use—plant promptly after delivery.
- All planting and care instructions are available on each product's label and our website.
- If any questions, direct them to scan the QR code below or visit our website directly.

### TOP 5 SELLING TIPS

1. Smile and make eye contact.
2. Clearly say who you are and what you're fundraising for.
3. Show them the brochure and suggest your favorite items.
4. Ask for their support—it's not just about bulbs, it's about your goal!
5. Always say thank you, even if they say no.

### TRACK YOUR GOAL!

Personal Sales Goal: \_\_\_\_\_ Items 

Items Sold So Far: \_\_\_\_\_ 

(Check off a flower for every item sold!)

### IMPORTANT DATES:

Order Forms & Money Due: \_\_\_\_\_

Estimated Delivery/Pick-Up Date: \_\_\_\_\_

Please make checks payable to MY group: \_\_\_\_\_ (not Dutch Mill Bulbs)

### SAFETY FIRST:

- Always sell with an adult or friend.
- Never enter anyone's home.
- Sell during daylight hours only.
- Ask a parent or guardian for help in your neighborhood.

### DELIVERY REMINDERS:

- Match items to the correct supporter.
- Deliver as soon as possible.
- Thank them again for their support!

### ONLINE OPTION:

Purchase on the website to have orders shipped directly to you or a loved one (perfect gift idea!)

50% is donated to group, charity or cause.

Enjoy **FREE SHIPPING** on all orders of 35 items or more! A shipping fee applies to orders with 34 items or fewer.

### QUESTIONS ABOUT PLANTING OR PRODUCTS?

Scan the QR code at right to visit our website for detailed planting guides and product info.



**Dutch Mill Bulbs, Inc**

201B Piper Circle, Annville, PA 17003

[www.dutchmillbulbs.com](http://www.dutchmillbulbs.com)

[info@dutchmillbulbs.com](mailto:info@dutchmillbulbs.com)

# Spring 2026 Fundraising Form



Leader: \_\_\_\_\_

Hi, my name is: \_\_\_\_\_

I am fund raising for: Troop 72

My goal is to sell \_\_\_\_\_ pkgs \* Make checks payable to group / organization above.

- Good Luck Shamrocks
- Everbearing Strawberries
- Harlequin Flowers
- Spring Allium Mix
- Anemone St. Brigid
- Four O'Clock
- Spectacular Gladiolus
- Crocsmia Mix
- Stargazer Lilies
- Pink Rain Lilies
- Variegated Hosta
- Elf Lilies
- Ranunculus Mix
- Lavender Astilbe
- Blazing Stars
- Peacock Orchid
- Baboon Flower Mix
- Bleeding Hearts

Sample	Name	Telephone Number	A	B	C	D	E	F	G	H	I	J	K	L	M	N	O	P	Q	R	TOTAL PKGS. SOLD	TOTAL AMOUNT PAID
			Susan Bean	534-0902																		
1																						
2																						
3																						
4																						
5																						
6																						
7																						
8																						
9																						
10																						
11																						
12																						
13																						
14																						
15																						
Total Pkgs. Sold ▶																						
Thank You for Supporting Our Group!			A	B	C	D	E	F	G	H	I	J	K	L	M	N	O	P	Q	R	Totals	

SEASON ENDS MAY 15. DEADLINE FOR MY FUNDRAISER IS May 11th. SHIPPING FOR SPRING ITEMS IS MARCH 15 TO MAY 31.

<https://dutchmillbulbs.com/products/?ref=bsa-troop-72-fogelsville-pa>

### Your Referral Link

## BSA Troop 72, Fogelsville, PA

Share this link with supporters. Orders placed through this link will be credited to your fundraiser.

<https://dutchmillbulbs.com/products/?ref=bsa-troop-72-fogelsville-pa>

Coupon Code: **bsa-troop-72-fogelsville-pa**

### Your QR Code



Share your QR code on social media or print it for in-person fundraising. Scanning links directly to your fundraiser page.



[Download QR Code](#)